

# *BT Series*

## Mechanical Bearing Spin Tables

### Precision Rotary Tables

**ABTech** inc. offers durable mechanical rotary tables incorporating pre-loaded angular contact bearings and precision ground internal shafts. Clear apertures through the bearing provide cable or hose access to the worktable surface or allow room for drawbar-type collet fixtures.

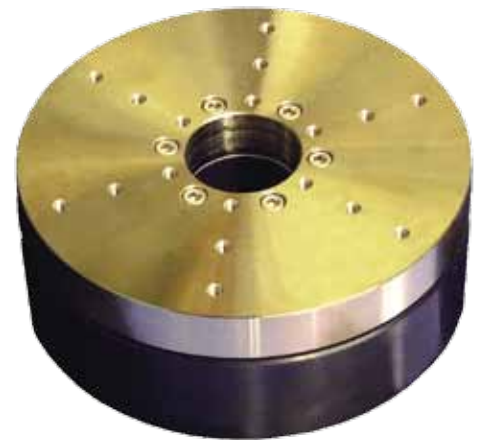
Since no air supply is required to operate, BT series tables are completely portable and can be conveniently located in any shop or quality control lab where the ultra-precision of air bearings may not be required.

These rotary ball tables provide an accurate reference axis for production floor work piece inspection. Suitable for inspection of automotive and other precision machined parts, cylindrical part staging and a variety of assembly applications.

Optional fine adjustment tilt and center worktables allow you to precisely align your part to the rotational axis – eliminating misalignment errors from your measurements. Add an **ABTech** designed direct drive motor and high resolution encoder package for light duty machining and grinding.

Phone: 1-603-358-6431  
Fax: 1-603-358-0196  
info@abtechmfg.com  
[www.abtechmfg.com](http://www.abtechmfg.com)

ABTech, Inc.  
P.O. Box 10296  
126 Monadnock Highway  
Swansey, NH 03446

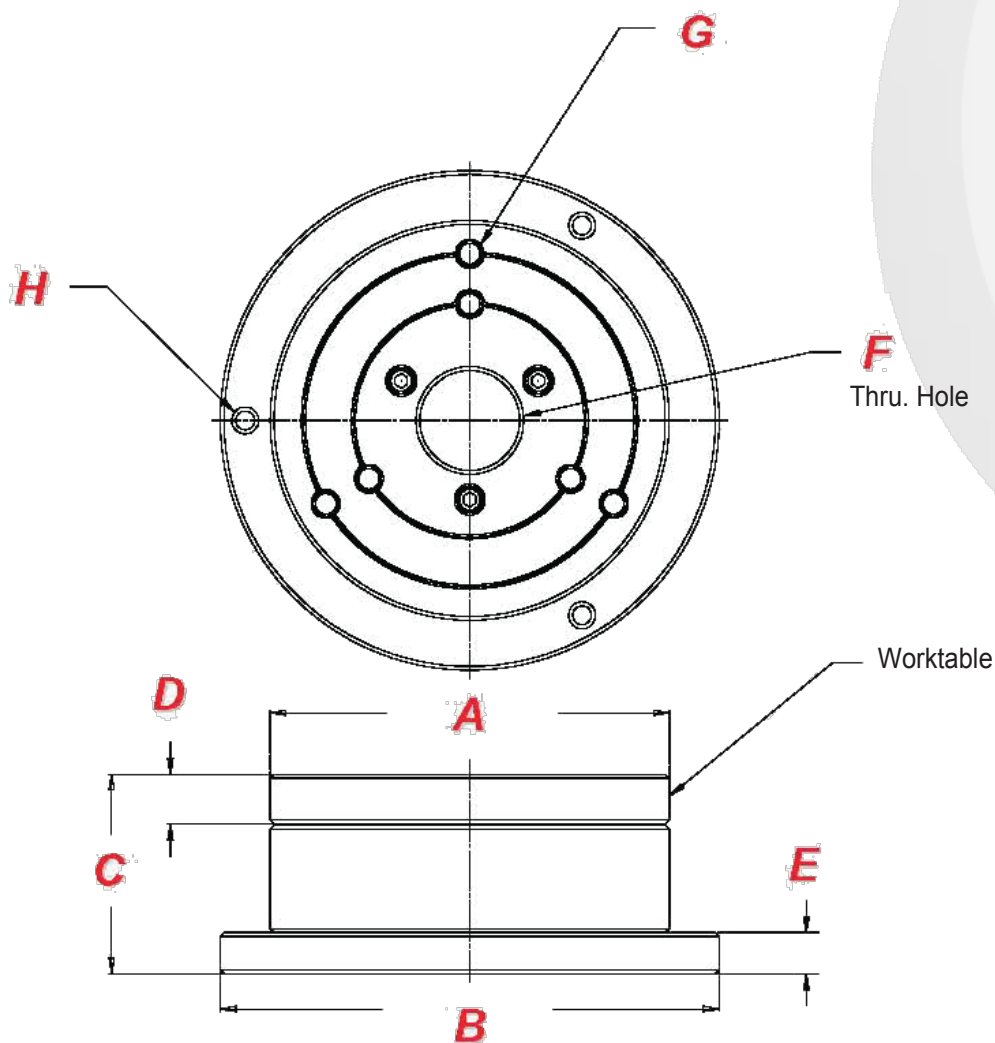


#### Features:

- Portable mechanical bearing design
- Very precise rotary motion
- Durable steel worktables and shafts
- Clear through holes through worktable and bearing
- Worktables available from 6" (150mm) up to 12" (300mm)
- Tilt and center worktables in 4 knob and 8 knob designs
- Optional motor drives, encoders, drive amplifiers and controls
- Custom tooling and fixturing design and manufacturing available
- Modular design - custom systems can be provided for O.E.M.
- Made in USA

# BT Series

## Precision Mechanical Bearing Spin Tables



Accuracy Class	Radial/Axial
<b>A50</b>	50 $\mu$ " (1.25 $\mu$ m)

### Options & Accessories:

- Tilt and center worktables
- Motor drives and controls
- Encoders and amplifiers
- Dual element filter/regulators
- Granite surface plates
- Gage stands
- Custom bolt circle patterns
- Custom fixturing and work holder tooling

### Ordering Information:

Specify model number & worktable size

<b>BT-150 / XXX</b>
<b>150</b>
<b>200</b>
<b>250</b>
<b>300</b>

Consult ABTech engineering for larger sized spin tables

	<b>150</b>	<b>200</b>	<b>250</b>	<b>300</b>
<b>A</b>	6.00in. (150mm)	8.00in. (200mm)	10.00 (250mm)	12.00 (300mm)
<b>B</b>	Ø7.50" (190.5mm)			
<b>C</b>	3.00" (76.2mm)			
<b>D</b>	.750" (19.05mm)			
<b>E</b>	.625" (15.88mm)			
<b>F</b>	Ø1.50" (38.1mm) Thru. Hole			
<b>G</b>	3/8-16UNC-2B			
<b>H</b>	3 Mounting holes for 1/4" S.H.C.S. on a Ø6.750" (171.45mm) Bolt Circle			

All specifications are subject to change without notification